



Paris CDG Airport © Aéroport de Paris - BULROT

# A world-class transportation network

Located at the crossroads of Europe, companies based in Paris Region can easily access a market of 500+ million customers and all major European cities. The Region is easy to get to, with 3 international airports and 7 TGV (high-speed train) stations. As the Region prepares to host the 2024 Olympic Games, several large public infrastructure projects are currently in development and will be constructed by 2030, including the Grand Paris Express.

## Reach 513 million consumers in under 2 hours by plane

Paris Region's high quality infrastructure ensures the seamless flow of people, goods, capital and data.

### By plane

Paris Aéroport, 2018, \*2019

- 3** international airports
- 716,524** aircraft movements
- 165** airlines
- 119** countries served from Paris Region
- 357** destinations served from Paris

**108M**  
passengers

**12.2M**  
connecting passengers

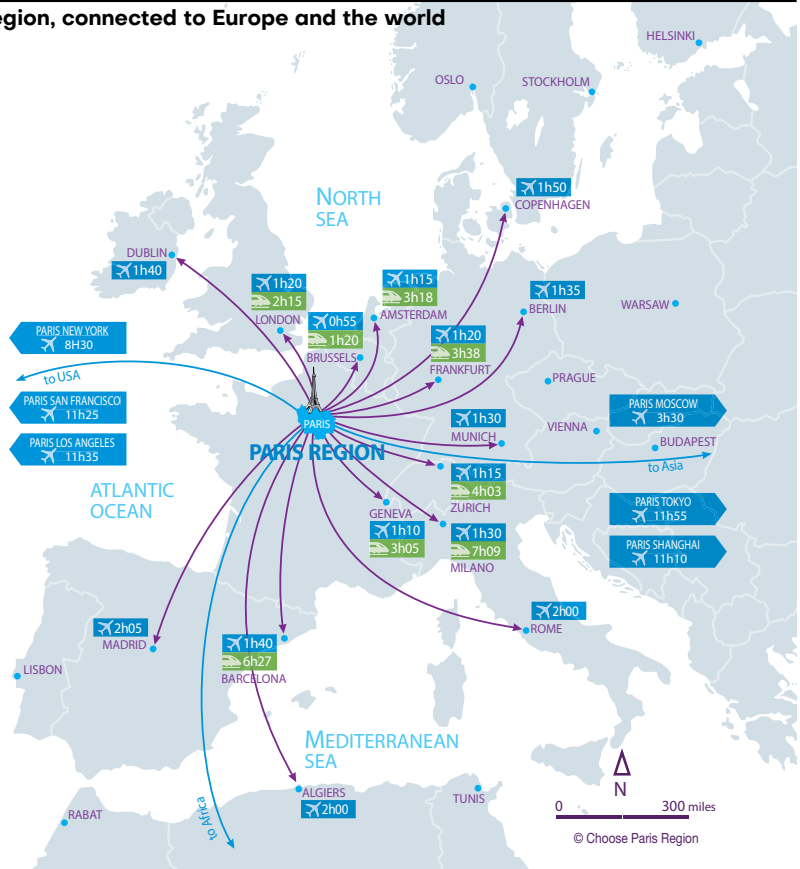
**Paris-Charles de Gaulle (CDG)**  
**#2** in Europe for passenger traffic  
**76.1 million** passengers  
**498,175** aircraft movements

**Paris-Orly**  
**31.8 million** passengers  
**218,349** aircraft movements

**Paris-Le Bourget**  
 Europe's leading business airport  
**100,000** passengers  
**57,295** aircraft movements

**10** airfields and **1** heliport

## Paris Region, connected to Europe and the world



### By train

SNCF, Aarafer, 2017 and Ile-de-France Mobilités

**10** main stations, including

**7** TGV (high-speed train) stations

**1 million** passengers on **3,550** trains per day on the Paris Region railway network  
**5** railway stations have traffic that exceeds **100,000** travellers daily  
 Gare du Nord, **#1** busiest European station  
**19 million** TGV passengers travelling from Paris to main European destinations  
**4,700 km** of railway tracks, of which **636 km** of LGV (High Speed Line)

## An efficient transit and mobility system at the regional level

Public transport, bicycles, electric scooters and scooters, self-service vehicles, autonomous cars, buses and driverless metros: the street is divided up thanks to a very diverse offer which is constantly expanding.

Type of trips	Number of trips / weekday	Evolution 2010/2018
Walking	17.2 million	+ 9 %
Car	14.8 million	- 5 %
Public transport	9.4 million	+ 14 %
Bike	840,000	+ 30 %
Motorized two-wheeler	420,000	- 25 %
Others	380,000	x 2
<b>Total</b>	<b>43 million</b>	<b>+ 5 %</b>

Île de France Mobilités (2019)

### 4.7 billion trips by public transport in Paris Region

Mode of traffic	Lines	Millions of trips*
Subway	16	1,560
Train - RER** (SNCF - RATP)	14	1,409
Tramway	10	315
Bus/night buses	1,510	1,436
<b>Total</b>	<b>1,550</b>	<b>4,720</b>

Île de France Mobilités d'après Optile, RATP, SNCF (2017, \*2016) \*\* High-speed metro

### Public transport

**2,753 km of metro, train, RER and tramway network**  
**6,200 regional trains every day**  
**At rush hour, over 650 trains simultaneously.**  
**385 stations at key points throughout the network**  
**270 green buses (electric or gas) in circulation, more than 5,000 by 2025**  
**47 night bus lines serving 200 towns and cities**

### Shared transport for alternative mobility

A growing offer with innovative and green alternative transport solutions to get around without polluting the environment.

**Self-service and free-floating bikes, cars and mopeds**

**850,000 trips per day +30% since 2010.**  
**40% of trips during the week are to go to work.**

**Velib Metropole, self-service bicycle system**  
**16,000 bikes:**  
**30% of electric power-assisted bicycles,**  
**70% of traditional bicycles,**  
**1,364 stations in 55 municipalities**  
**Around 70,000 trips per day**

**Véligo Location, a long-term rental service (6 to 9 months) of electrically assisted bikes**  
**10,000 Véligo Location bikes**

**Free-floating bike, scooter and moped operators :**  
**— E-Bikes: around 4,000**  
**— E-Mopeds: around 4,000**  
**— E-Scooters: several hundreds**

**Freefloating cars**  
**— Carsharing (car clubs)**  
**— Carsharing peer to peer**

L'Institut Paris Region, Ile-de-France Mobilités, Velib Metropole

## A wide public transportation network, extended further by the Grand Paris Express

The largest urban development project in Europe providing a new transport network. Heavy investments in modernizing and expanding the public transport network.

**200km of additional automated metro lines**  
**68 new stations**

**2 million passengers everyday**  
**€35b invested through 2030**

**The project is set to link Paris Region's 3 airports, as well as business districts and scientific clusters.**

**1 million m<sup>2</sup> of construction projects associated with the Grand Paris Express project**  
**300,000 m<sup>2</sup> of commercial space**  
**Over 7,000 residential projects**

- Paris 2024 Olympic and Paralympic venues**
- Business hubs**
  - 1. La Défense Europe's premier business district
  - 2. Gennepilliers Second largest river port in Europe and the largest multimodal platform in Paris region, both in terms of size and activity
  - 3. Saint-Denis Pleyel Creative industries (cinema, audiovisual, digital entertainment)
  - 4. Le Bourget No. 1 business airport in Europe
  - 5. Triangle de Gennevilliers International Business Centre including the Villepinte Convention Centre
  - 6. Grand Roissy No. 1 airport platform in Europe
  - 7. Orly - Rungis Logistics airport, No. 1 fresh products market in the world, which will host the "Cité de la Gastronomie" from 2024.
  - 8. Satory - Saint-Quentin - Versailles Automotive and military hub
  - 9. Val de Fontenay First tertiary sector in Eastern Paris
  - 10. Front de Seine - Val de Seine Tertiary, digital and cultural center of the west of Ile-de-France
- University research hubs**
  - 1. Paris Saclay No. 1 research and higher education hub in Europe
  - 2. Vallée de la Bièvre Biotechnologies and life sciences
  - 3. Campus Condorcet No. 1 European university hub for humanities and social sciences
  - 4. Cité Descartes No. 1 higher education hub in the eastern Paris region

- Related real-estate projects**  
 Construction operation developed on the station complex, designed at the same time as the station's construction and in conjunction with it
- 9 related projects allocated
  - 26 related projects under consideration
  - Pre-project studies

## The Grand Paris Express urban sites

